



6/12-16 Goulburn Street Warwick Farm NSW

2 1 1

Perfectly positioned is this 1st floor neat unit located in the same Street as Liverpool Hospital. The property consists of:

- 2 Bedrooms both with built in wardrobes
- Open plan lounge/dining room
- Remodeled kitchen
- Original bathroom
- Internal laundry

Other inclusions are floating flooring throughout, air conditioning, security intercom, security gates to building and lock up garage. This unit is located in one of the best Streets in Liverpool and within walking distance to Westfields, Train station and schools. Contact Troy Williams on 0418 239774 for more details.

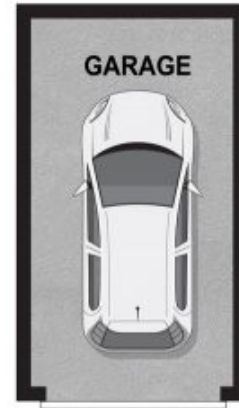
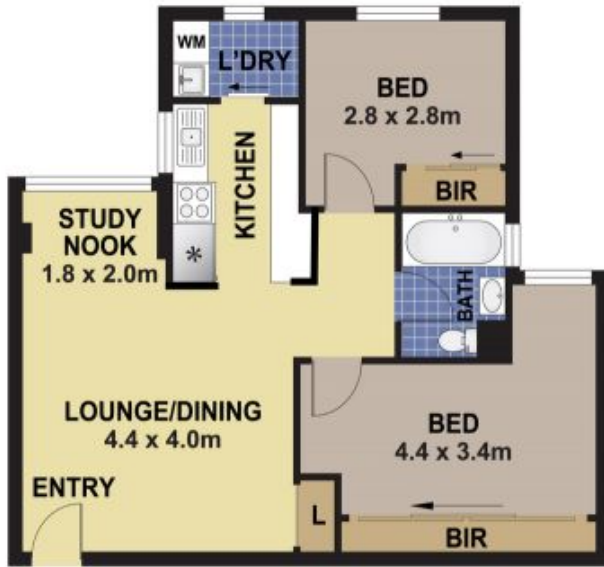
Price : \$ 302,000

View : <https://www.realestateone.com.au/sale/nsw/liverpool-fairfield/warwick-farm/residential/unit/7471936>



Troy Williams
0418 239 774

Troy Williams
02 9602 6644



6/12-16 GOULBURN STREET, WARWICK FARM

DISCLAIMER

PLANS SHOWN ARE FOR MARKETING PURPOSES ONLY. ALL DIMENSIONS ARE APPROXIMATE AND NOT TO SCALE. THEY ARE SUBJECT TO ERRORS AND INACCURACIES AND NO LIABILITY WILL BE ACCEPTED. INTERESTED PARTIES SHOULD MAKE THEIR OWN ENQUIRIES.