



1/12-16 Goulburn Street Warwick Farm NSW

2 1 1

Located in a secure complex in the heart of Warwick Farm, this well presented first-floor unit offers comfort, convenience, and style-perfect for first-home buyers, investors, or downsizers.

Key Features:

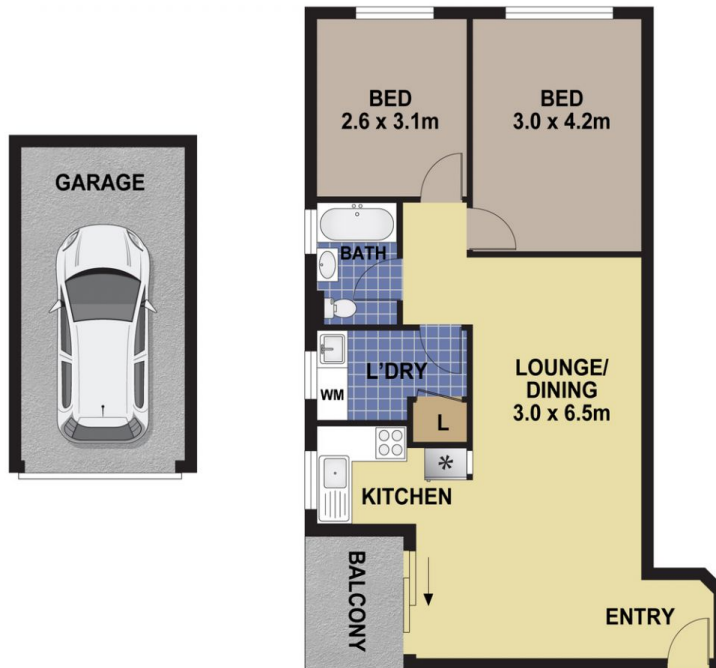
- 2 spacious bedrooms
- Original kitchen
- Open-plan lounge and dining area
- Clean, well-maintained bathroom
- Internal laundry for added convenience
- Private balcony - perfect for relaxing
- Lock-up garage with secure access
- Security intercom and gated complex

Type : Unit
Price : \$410,000 - \$430,000
View : <https://www.realestateone.com.au/sale/nsw/liverpool-fairfield/warwick-farm/residential/unit/8700584>



Troy Williams
 0418 239 774
Troy Williams
02 9602 6644

[For full version visit the website](https://www.realestateone.com.au)



1/12-16 GOULBURN STREET, WARWICK FARM

DISCLAIMER

PLANS SHOWN ARE FOR MARKETING PURPOSES ONLY. ALL DIMENSIONS ARE APPROXIMATE AND NOT TO SCALE. THEY ARE SUBJECT TO ERRORS AND INACCURACIES AND NO LIABILITY WILL BE ACCEPTED. INTERESTED PARTIES SHOULD MAKE THEIR OWN ENQUIRIES.

